

NOTES:

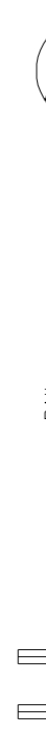
1. ALL DIMENSIONS ARE IN MM AND ELEVATIONS & CO-ORDINATES ARE IN METRES, UNLESS OTHERWISE SPECIFIED ELSE WHERE IN THIS DRAWING.
2. FOR GA DRAWINGS & FOUNDATION DETAILS OF TRANSFORMERS, PLEASE REFER OCA DRAWINGS OF JHANSI.
3. CABLE ROUTE MAY BE ADJUSTED AT SITE TO SUIT SITE CONDITIONS AND AS PER INSTRUCTION OF SITE ENGINEERS
4. FOR DIMENSION DETAILS OF TRANSFORMER FOUNDATIONS, COLUMNS, BEAMS AND FIRE WALLS ETC., REFER TO RESPECTIVE CIVIL DRAWING.
5. ADEQUATE SLOPE SHALL BE PROVIDED FROM GT TO OIL & WATER COLLECTION AREA.
6. BUS DUCT ROUTINGS, ITS SUPPORTS, WALL CUT ELEVATION, BUS DUCT CLEARANCES ETC SHOWN IN THIS DRAWING ARE INDICATIVE. REFER TO BUS DUCT LAYOUT DRAWING FOR DETAILS.
7. TRANSFORMER SOAK OIL PIT SHALL BE FILLED WITH 40MM GRANULATES
8. THE AREA AROUND THE TRANSFORMER SHALL BE PROVIDED WITH RCC GRADE SLAB WITH NOMINAL REINFORCEMENT.
9. THE TRENCHES SHALL BE FILLED WITH SAND
10. IN LINE WITH THE RESOLUTION MADE DURING NOV DATED 13.08.2015 TROLLEY MOUNTED PUMP SHALL BE PROVIDED FOR BURNIT OIL PIT.

REFERENCE DRAWINGS. :

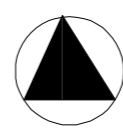
1. OVERALL PLOT PLAN - 0-381-01-01570-R03
2. OUTLINE GENERAL ARRANGEMENT OF SIG-4 TRANSFORMER(50 MVA) DRG. No.1-456-00-50-905 R03
3. OUTLINE GENERAL ARRANGEMENT OF SIG-1 TRANSFORMER(27 MVA) DRG. No.1-456-00-50-900 R00
4. FOUNDATION DRAWING OF SIG-4 TRANSFORMER(50 MVA) DRG. No.2-456-00-510-41 R03
5. FOUNDATION DRAWING OF SIG-1 TRANSFORMER(27 MVA) DRG. No.1-456-00-50-900 R01
6. KEY SLD DRG. No. 0-381-21-02259
7. NFPA 850
8. BUS DUCT DRAWING - 02851410001
9. OUT DOOR AREA CABLE TRENCH DRAWING
10. GENERATOR TERMINAL DETAILS
11. SIG HALL EQUIPMENT LAYOUT -138.0106516-R02

TRANSFORMER DETAILS				
S/LNO	DESCRIPTION	RATING	WEIGHT	OIL QUANTITY
1	G14-Generator Transformer	50MVA,6911KV/	76000KGS	27000 LITRES
2	ST-1 GENERATOR TRANSFORMER	271MVA,6911KV/	62000KGS	18000 LITRES

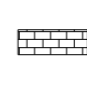
LEGENDS:



SAND FILLED

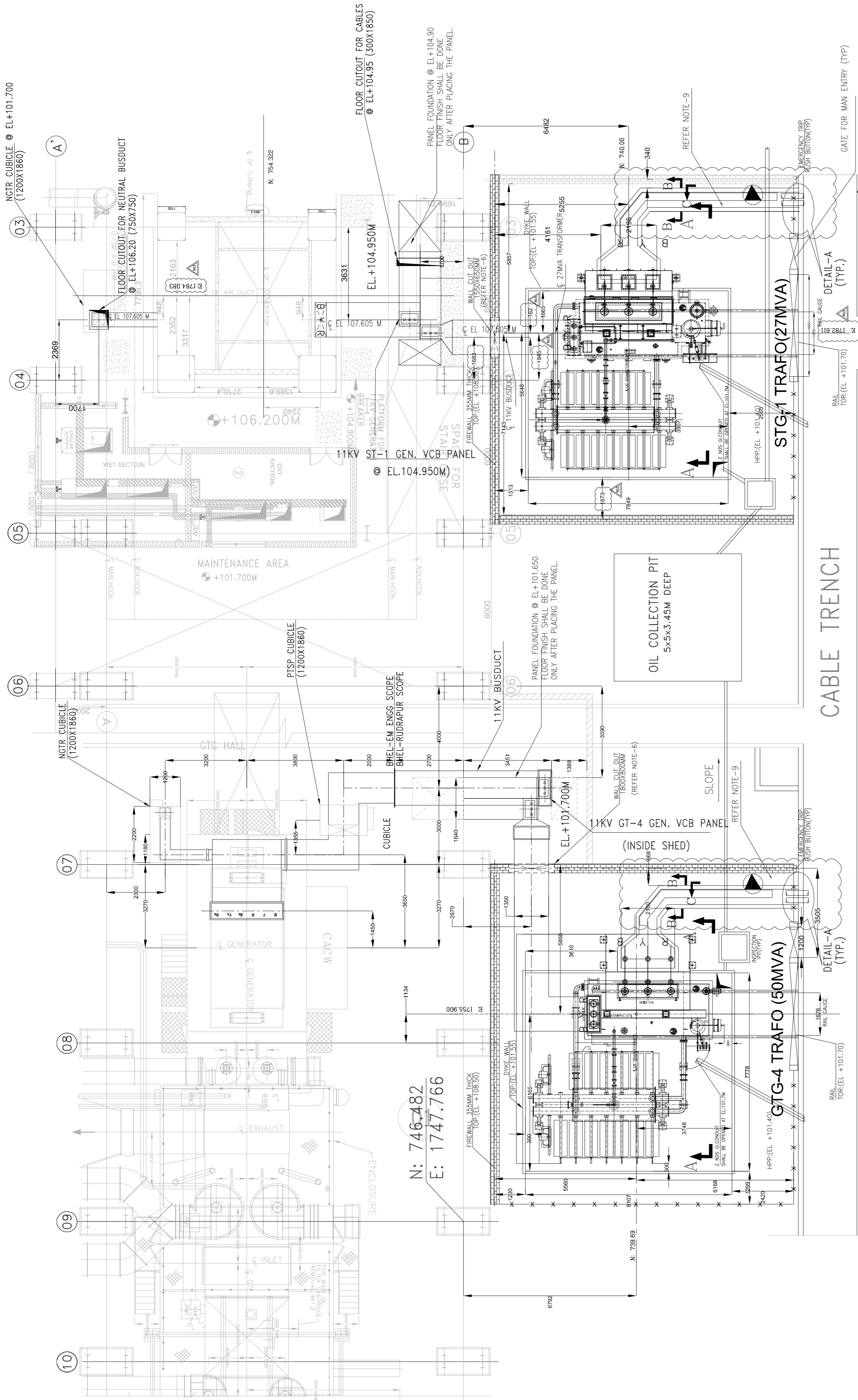


SAND FILLED



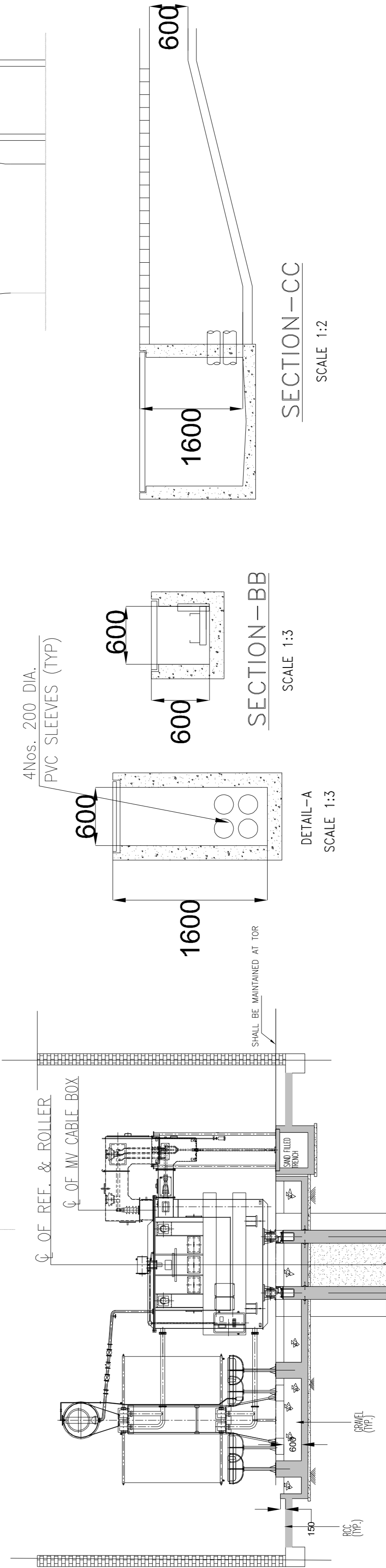
FIREWALL

REV	DATE	DESCRIPTION	DRN	STR	ELEC	INST	APPROVED BY
R02	20-07-16	.	.	xxx	.	xxx	xxx
R01	21-05-16	.	.	xxx	xxx	.	xxx
R01	29-10-15	.	.	xxx	xxx	xxx	xxx



CABLE TRENCH

ROAD FOR CONNECTIVITY



SECTION - AA